

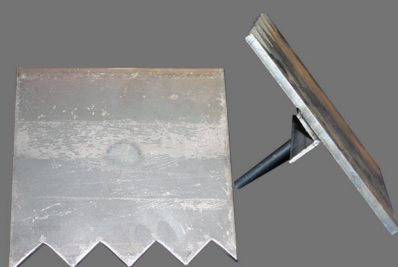


Improve furnace cleanliness

Reduce metal in dross

Increase furnace efficiency

Increase the quantity of good, useable metal in a furnace

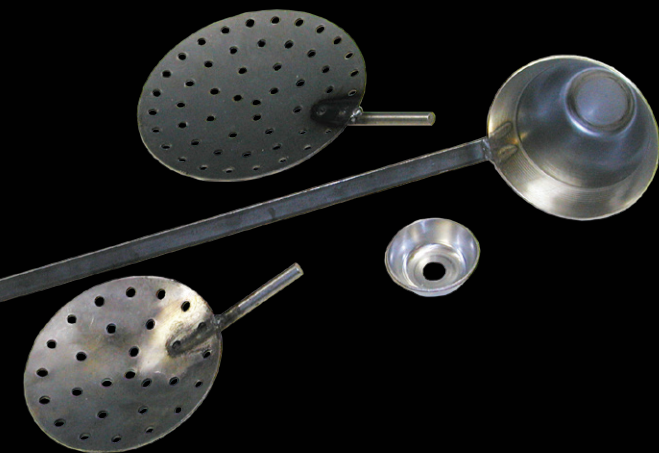




FOUNDRY TOOLS

From scrapers to skimmers to flux rakes, Pyrotek offers a full line of performance-improving foundry tools. Better flux and furnace cleanliness techniques, along with the right tools, can improve metal melt quality and reduce the amount of metal in dross, as well as improve refractory and furnace life.

Pyrotek's Columbia City, Indiana, USA, plant supplies a complete line of tools for chiseling, scraping and sampling, including stainless steel skimmers, hand ladles, flat-bottom and round-bottom bowls, as well as conical shapes. Custom shapes—with or without handles or with stub handles—can be designed according to a customer's specification. Tools are available in a variety of materials, from stainless steel to ceramic fiber, and in various styles and sizes.



STAINLESS STEEL AND MILD STEEL SKIMMERS



Pyrotek hand skimmers easily remove dross from molten metal and are manufactured with standard stub handles. The stub handles attach easily to common pipe, enabling customers to modify and fabricate customized handles. Non-standard sizes, materials, thickness and handle configurations are available upon request.

STAINLESS STEEL PART NUMBER	CARBON STEEL PART NUMBER	DIAMETER INCH	STUB HANDLE INCH
006007	000914	6	3
006008	006004	8	3
006005	000915	10	3
006006	000916	12	3

CONICAL STAINLESS STEEL AND MILD STEEL LADLES

Pyrotek ladles can be utilized in lab or foundry settings and are available in stainless steel and mild steel. Weights under 10 pounds include a 24-inch handle. For the larger size ladles, the stub handles attach easily to standard pipe for in-house handle assembly. Non-standard sizes, materials, thickness and handle configurations are available upon request.



STAINLESS STEEL PART NUMBER	CARBON STEEL PART NUMBER	CAPACITY LB/AL	HANDLE LENGTH INCH	DEPTH INCH	TOP INNER DIA. INCH	BOTTOM INNER DIA. INCH
009128	Unassigned	1/4	24	1-5/16	2-17/32	1-3/4
005986	011370	1/2	24	1-3/8	2-7/8	1-3/4
005983	Unassigned	1	24	2	3-13/32	1-3/4
005984	Unassigned	1-1/2	24	2-1/2	3-13/16	1-3/4
005990	005978	2	24	2-3/8	4-15/32	2-1/2
005991	Unassigned	2-1/2	24	2-11/16	4-23/32	2-1/2
005996	009123	4	24	3-7/16	5-11/32	2-1/2
005998	009124	5	24	3-7/8	5-45/64	2-1/2
005999	Unassigned	6	24	4-5/16	6-5/64	2-1/2
006001	008283	8	24	5	6-41/64	2-1/2
006700	005976	10	3" stub	5-1/2	7-1/16	2-1/2
005989	006889	15	3" stub	6-11/16	8-3/64	2-1/2
010146	008988	20	3" stub	7-5/8	8-13/16	2-1/2
019246	008938	25	3" stub	8-7/16	9-31/64	2-1/2
008924	009961	30	3" stub	9-1/16	10-1/64	2-1/2

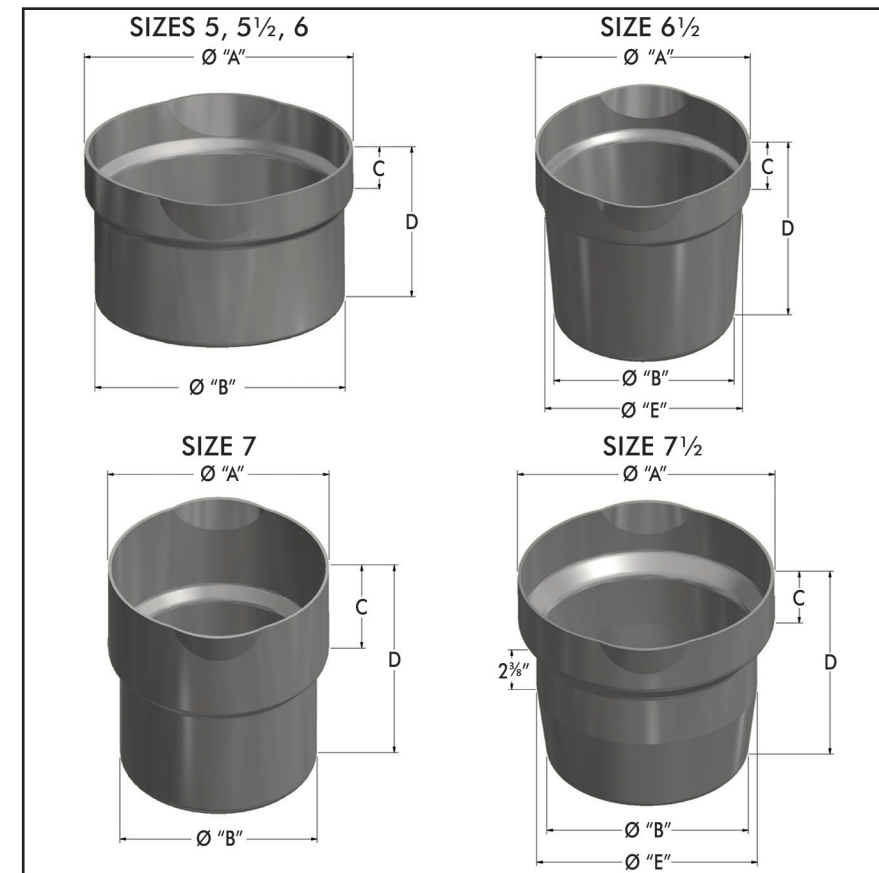
DIA = Diameter

BUCKET STYLE LADLES

Low cost bucket ladles are available for medium to high capacity manual pouring. Typically used with ring shank handles. All ladles have two pouring spouts and are made of 10 gauge steel.



UNCOATED PART NUMBER	CERAMIC COATED PART NUMBER	SIZE	"A" INCH	"B" INCH	"C" INCH	"D" INCH	"E" INCH	CAPACITY LB/AL
005833	006633	5	9	8-3/8	1-1/2	5-1/2		24
000066	006655	5.5	9	8-3/8	1-1/2	6-1/2		27.5
000067	006494	6	9-1/4	8-3/8	1-5/8	7-5/8		34
000068	001640	6.5	9	7-1/2	2	8-1/2	8-3/8	34
000069	006578	7.0	9-1/4	8-1/4	4-1/4	10		56
000070	006707	7.5	10-3/4	8-3/8	2-5/16	9	9-1/4	56



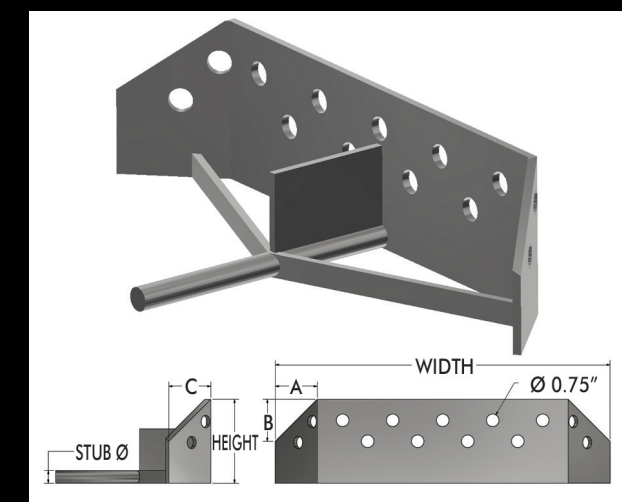
FLUX HOE

HANDLE SIZES

- 9/16 inch stub fits: 1/2 inch SCH 40 or SCH 80 pipe
- 3/4 inch stub fits: 3/4 inch SCH 40 pipe
- 1 inch SCH 80 stub fits: 1-1/4 inch SCH 40 or 1 1/2 inch SCH 80 pipe

PART NUMBER	WIDTH INCH	HEIGHT INCH	STUB INCH	A,B,C INCH	HOLES
032703	10	4	9/16	2	7
032492	20	5	3/4	2-1/2	13
032704	30	7-1/2	1 SCH 80	3	19

SCH = Schedule

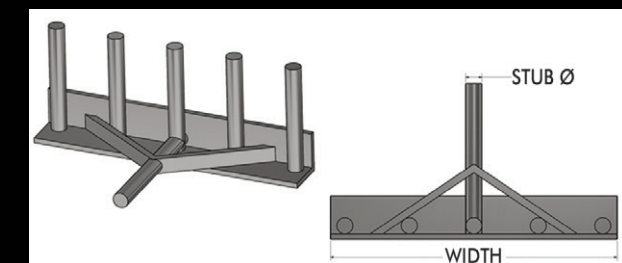


FLUX RAKE

HANDLE SIZES

- 9/16 inch stub fits: 1/2 inch SCH 40 or SCH 80 pipe
- 3/4 inch stub fits: 3/4 inch SCH 40 pipe
- 1 inch SCH 80 stub fits: 1-1/2 inch SCH 40 or 1-1/2 inch SCH 80 pipe

PART NUMBER	WIDTH INCH	TINES	STUB INCH
032702	10	5	9/16
032493	20	7	3/4
033524	30	9	1 SCH 80



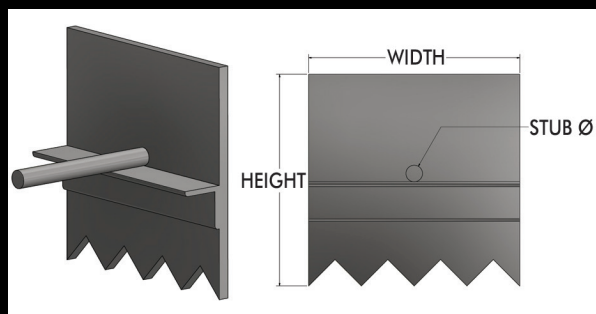
STACK MELT SCRAPER

HANDLE SIZES

9/16 inch stub fits:

1/2 inch SCH 40 or SCH 80 pipe

PART NUMBER	WIDTH INCH	HEIGHT INCH	STUB INCH
033312	5	5	9/16
032700	8	8	9/16
033311	10	10	9/16



WALL SCRAPER

HANDLE SIZES

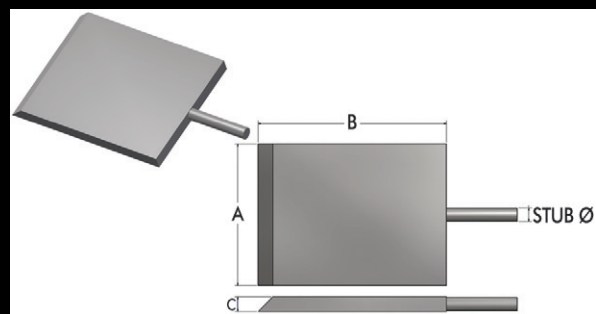
9/16 inch stub fits:

1/2 inch SCH 40 or SCH 80 pipe

3/4 inch stub fits:

3/4 inch SCH 40 pipe

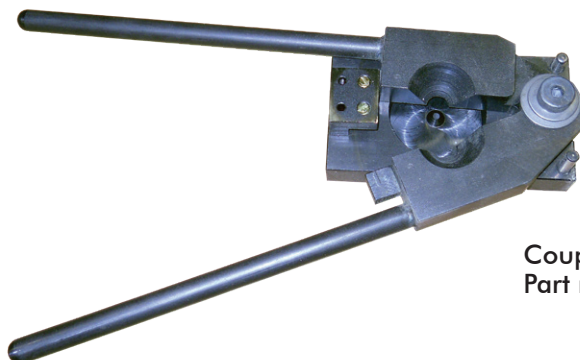
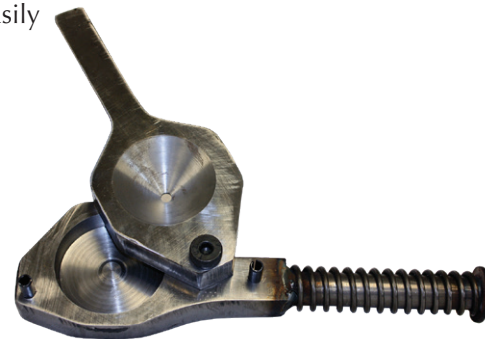
PART NUMBER	A INCH	B INCH	C INCH	STUB INCH
033313	4	6	5/8	9/16
033314	6	8	5/8	9/16
033315	8	10	3/4	3/4
033316	3-1/2	5	1/2	9/16



COUPON MOLDS

Heavy duty coupon molds for spectrographic analysis are manufactured from fully machined steel. Scissor style molds enable maintenance or metallurgical personnel to easily remove the coupon.

Coupon Mold
Part number 015935



Coupon Mold
Part number 024072



K-Mold Test Bar
Part number 019362

Pyrotek's mission is to provide innovative solutions to customer needs utilizing our global resources.

Contact information: www.pyrotek.com/contact

PYROTEK INC.
COLUMBIA CITY
4447 E. PARK 30 DRIVE
COLUMBIA CITY, IN 46725 USA

P: 1-260-248-4141
F: 1-260-248-2350
www.pyrotek.com

SEP-14-EL-1417