



PYROTEK R3 TIP SECTIONS UNPACKING GUIDE

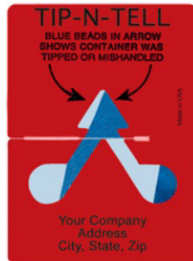
REMOVING PYROTEK R3 TIP SECTIONS FROM SHIPPING CRATES

1. When a Pyrotek R3 Tip Sections shipment arrives, check the Tip-N-Tell® label on the outside of the crate.

If the crate has been turned over, the arrow on the label will be partially blue. If the label is missing, there is possible damage inside the crate. There is an additional Tip-N-Tell label located inside the crate that cannot be removed by the shipping company.



STANDARD LABEL



ACTIVATED LABEL

2. Check the ShockWatch® label on the outside of the crate. If the indicator in the middle of the label is red, the crate has been handled roughly. If the label is missing, there is possible damage inside the crate. There is an additional ShockWatch label on the inside of the crate that cannot be removed by the shipping company.



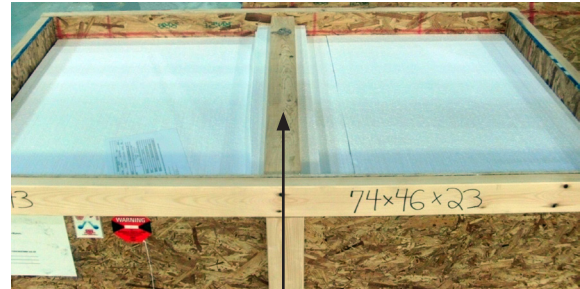
STANDARD LABEL



ACTIVATED LABEL

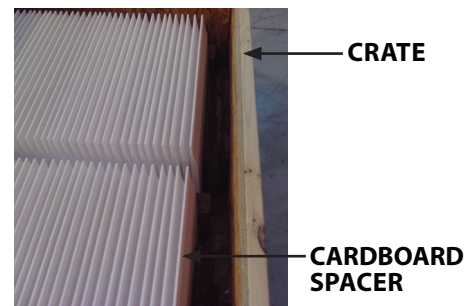
3. Be sure to inspect both of the indicator labels prior to signing the Delivery Receipt. If either of the labels show potential damage to the shipment, make a note regarding "Possible Concealed Damage" on the Delivery Receipt.
4. Remove the screws securing the crate lid with a power screwdriver or drill. It normally takes two people to remove the lid. Be careful not to drop the lid inside the crate as it is being removed.

5. Remove the screws securing the wooden lid support brace with a power screwdriver or drill. The brace is secured to both sides of the crate's interior. Be careful not to drop the brace inside the crate as it is being removed.



BRACE

6. Remove the sheets of styrofoam located under the wooden brace. Do not allow the styrofoam to drag on the tip sections as it is being removed.
7. The tip sections are packed tightly inside the crate with cardboard spacers. The front side of the crate is where the content labels are attached, and is one of the long sides of the crate. The back side of the crate is where the most cardboard spacers are located.
8. Carefully pry or hammer the back side of the crate loose, and pull the loose side 50 millimetres (2 inches) away from the rest of the crate. This will allow adequate room for the removal of the cardboard spacers.



9. Carefully remove the cardboard spacers from the crate.





PYROTEK R3 TIP SECTIONS UNPACKING GUIDE

10. Removing the tip sections from the crate requires two people. Carefully remove the tip sections without touching the fragile orifice ends.
11. Move one tip section at a time. Gently lift the tip section out of the crate until the base is visible.
12. Hold the base of the tip section in order to support it in an upright position.
13. Carefully stack the tip sections on top of each other, on a flat surface so their weight distribution is uniform.
14. Leave the tip sections on the flat surface for 12-24 hours after removing them from the crate. This will eliminate any potential bowing caused by uneven pressure inside the crate during transit.

*Tip-N-Tell® is a registered trademark of Index Packaging, Inc.
ShockWatch® is a registered trademark of Shockwatch, Inc.*

