



# PYROTEK SNIF SHEER NEO NOZZLE ASSEMBLY

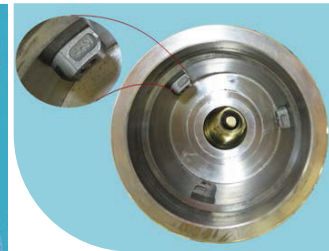
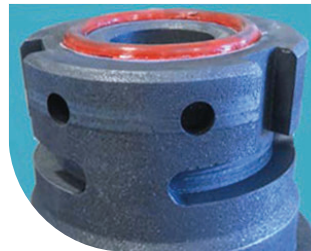
## FOR CASTHOUSE USE

The Pyrotek SNIF SHEER NEO Nozzle assembly is designed to provide a consistent and user-friendly experience for casthouse personnel.

When this nozzle is combined with the SHEER NEO rotor and shaft, an air cooled steel body assembly and a direct motor drive it provides a very effective solution for degassing molten aluminium.

The nozzle also provides the following advantages:

- An approximately 30 percent higher argon flow is available with this nozzle in comparison to the former SHEER nozzle technology. This results in either increased hydrogen reduction efficiency or increased metal refining capacity
- Bi-directional location pins. The location pins don't require an adjustment during the nozzle assembly, and have bigger footprints to lower the stress on the graphite contact surface
- The nozzle can only be turned in one direction, and the direction is verified by the engraved marks on the location pins
- Set screw holes allow the set screws to lock the stator in position



### BENEFITS

- Threadless design eliminates stress points created by graphite threads
- Less gas leakage and safer with chlorine gas
- Fewer nozzle failures
- Easy and fast shaft replacement
- No assembly measurements required
- Easy installation
- Visual feedback for the correct torque or turn

