

# WOLLASTONITE WFS

## DRY GROUND WOLLASTONITE POWDER

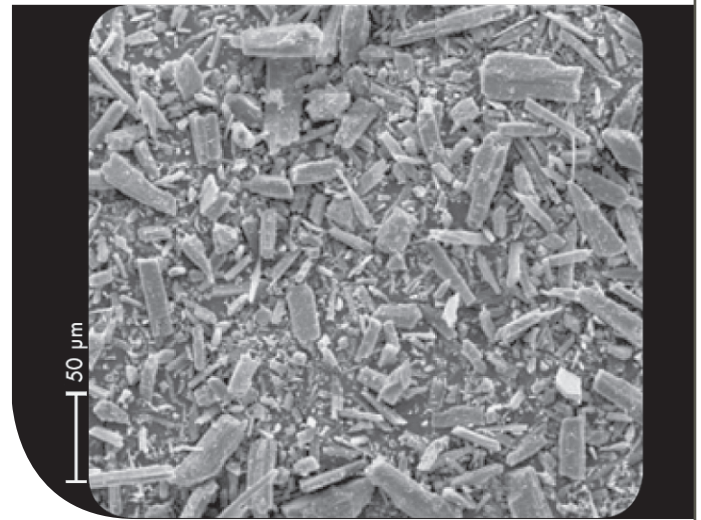
Pyrotek Wollastonite WFS is dry ground, chemically inert white powder that is less dense than aluminium and will not affect casting quality. Wollastonite outperforms red mud or bone ash as a parting agent and adheres and packs well into troughs. It provides excellent protection from skull buildup and increases product life for trough sections, refractories and tools.

### PHYSICAL PROPERTIES

Property	Value
Density—kg/m <sup>3</sup> (lb/ft <sup>3</sup> ) at 25°C (77°F)	≥900 (56.19)
Composition	>97% Wollastonite
Appearance	Acicular white powder
Moisture Content	0.05%
Size	Retained on 400 mesh : 1% maximum
Median Size—µm	9.0 Cilas granulometer
Brightness—ASTM E97	94

### BENEFITS

- Adheres to tools and refractories
- Chemically inert
- Applies easily
- Effectively releases skull



### APPLICATIONS

- Refractory parts and tools dry coating
- Glass manufacturing
- Parting agent
- Refractory crack sealant

### STORAGE

Wollastonite powder tends to agglomerate during prolonged storage. A maximum six month shelf life is recommended.

### HEALTH AND SAFETY

Prior to use, refer to the product safety datasheet for proper handling and required personal protective equipment.

