



GLASWEVE

MOLTEN ALUMINIUM FILTERING

Glasweve® is an effective metal filtration media for many aluminium foundries. Sand, permanent mould, shell, die casting and investment foundries have improved casting quality with Glasweve filters.

Glasweve does not contaminate molten aluminium. The recycled sprue, gate and casting risers can be remelted in production furnaces without affecting metal chemistry.

Contact Pyrotek for technical assistance in designing Glasweve filters for specific casting applications.

BENEFITS

- Reduces turbulence
- Decreases scrap
- Removes oxides
- Improves metal distribution

APPLICATIONS

- Stapled tubes
- Sewn bags
- Tubular shapes
- Cut shapes
- Filter bags
- Sprue socks

AVAILABILITY

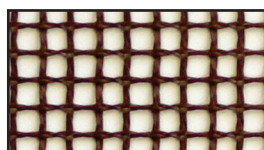
- Smoke and gas free formulations (F-100/0)
- Regular phenolic coating (F-9)
- Plain, leno or flat strand construction
- Standard size cut pieces
- Tubular shapes
- Die-cut circular pieces
- 50 piece units–508 x 610 millimetre (20 x 24 inch)
- Rolls–2 x 300 feet (0.6 x 91 metre) and 4 x 300 feet (1.2 x 91 metre)
- Custom sewn shapes
- Custom cut pieces

Standard Size Cut Pieces
38 x 51 mm (1.5 x 2.0 in)
51 x 51 mm (2.0 x 2.0 in)
57 x 57 mm (2.24 x 2.24 in)
51 x 76 mm (2.0 x 3.0 in)
64 x 64 mm (2.52 x 2.52 in)
76 x 76 mm (3.0 x 3.0 in)
76 x 102 mm (3.0 x 4.0 in)
102 x 102 mm (4.0 x 4.0 in)

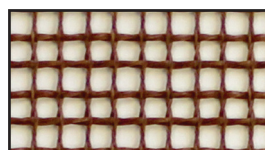
PATENT

www.pyrotek.com/patents

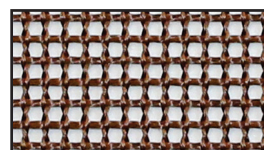




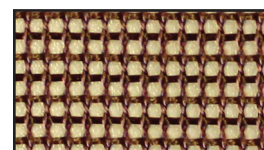
Mesh Number 32L F-9



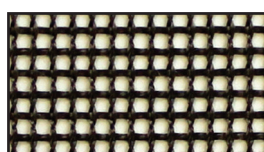
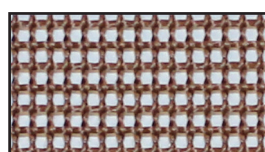
Mesh Number 32L F-12



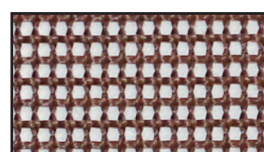
Mesh Number 36L F-9



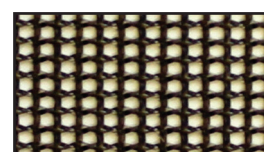
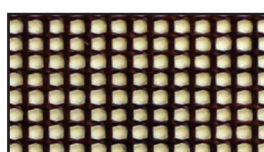
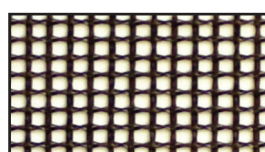
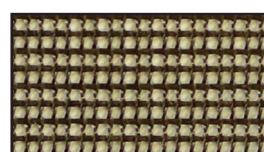
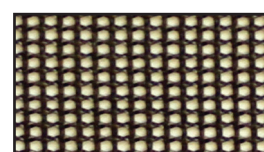
Mesh Number 36L F-12

Mesh Number 36L
F-100/0

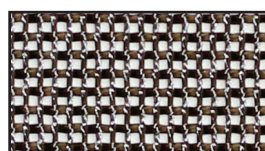
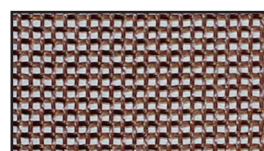
Mesh Number 40L F-9



Mesh Number 40L F-12

Mesh Number 40L
F-100/0Mesh Number LC40L2
F-12Mesh Number LC40L2
F-100/0Mesh Number LC43L2
F-100/25Mesh Number LC43L2
F-100/0

Mesh Number 43FK F-9

Mesh Number 43FK
F-100/0

Mesh Number 55P F-9



Mesh Number LC53P

PHYSICAL PROPERTIES

Weave Number	Property			
	Strand Count per Inch	Weave Pattern	Hole Size—cm ² (in ²)	Percent Open
32L	7 x 7	Leno	0.07420 (0.01150)	56.1%
34L	8.5 x 7.5	Leno	0.05122 (0.00794)	50.9%
36L	9.5 x 9	Leno	0.03222 (0.00500)	44.5%
40L	11 x 9	Leno	0.02554 (0.00400)	40.3%
LC40L2	11 x 9	Leno	0.02624 (0.00410)	42.2%
LC43L2	14 x 11	Leno	0.01469 (0.00230)	35.2%
LC53P	17 x 13	Plain	0.0102 (0.001578)	34.5%
43FK	13.5 x 10.5	Plain	0.01377 (0.00213)	31.2%
55P	17 x 16.5	Plain	0.00832 (0.00130)	35.9%

