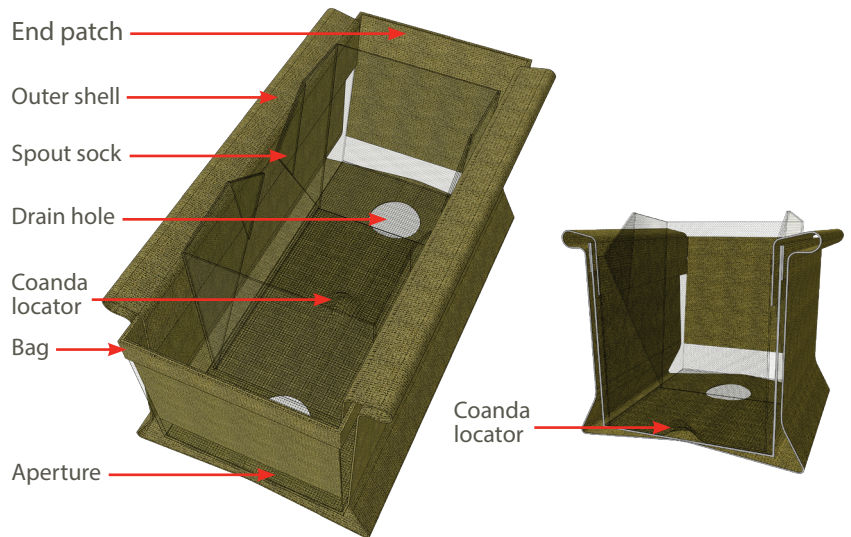




# Consistent Flow Control

## Pyrotek Thermally Formed (TF) Combo Bag

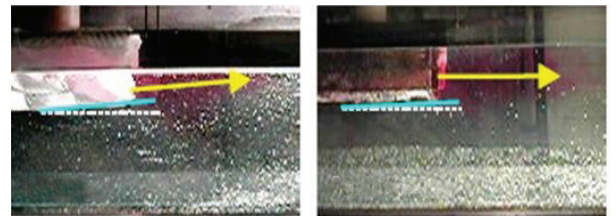


Pyrotek's TF combo bag provides consistent flow control due to its rigid form and is available in many geometric and fabric configurations. The fabric, manufacturing process, and coating create excellent rigidity, reduced emissions, and provide precise dimensional control and casting performance.

With optional features like drain holes, integrated spout socks, and varied fabric styles, Pyrotek TF combo bags can be customized for specific applications.

### Benefits vs. traditional (soft) combo bags:

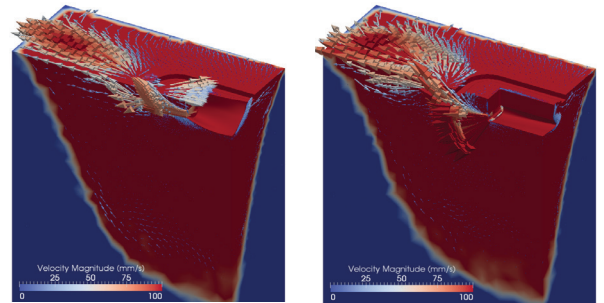
- Easy installation on existing mounting system
- Rigid at standard casting temperatures for up to 90 minutes
- Minimal fumes, smoke, and flame during cast start-up
- Reduced turbulence and oxide generation
- Improved bottom block filling
- Oxide attachment resistance
- Potential butt curl and scalping reduction



Traditional combo bag

TF combo bag

From water modelling, TF combo bag produces a lateral flow under the surface (i.e. less thermal gradient, less oxide generation).



Traditional combo bag

TF combo bag

From computational modelling, the TF combo bag flow pattern is directed toward the short face and corners of the mould, validating water modelling results.

## Why Pyrotek?

Pyrotek's global network of field engineers works with OEMs, distributors, and engineering firms to determine the best materials, products, and designs to suit their needs.

For more information call: +1.866.797.6835 or contact your local Pyrotek application engineer.

